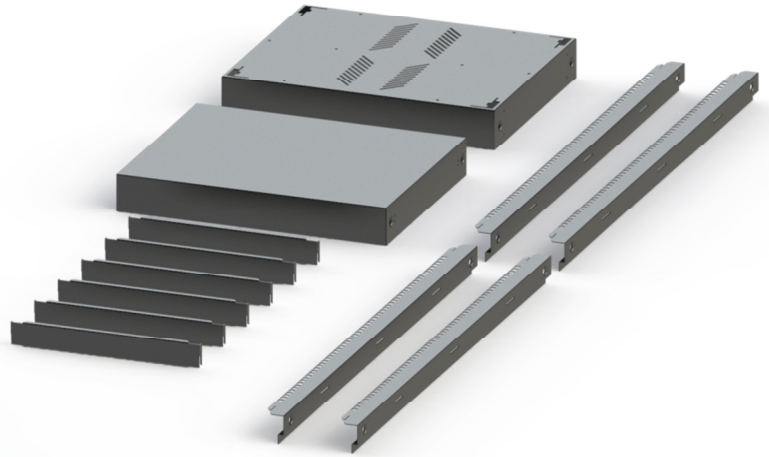


IRFF1-xx-440

19" Floor Standing Flat Pack Rack - Style 1



Features:

- Standard 19"
- Flat Pack Design
- Easy Assembly (8 Screws)
- Quick & Simple 19" Rack Solution
- Durable black textured powder coat
- Unique clip stabilizers
- Extremely rigid

Benefits:

- Standard range of 19" accessories
- Compact & Rigid Flat Pack structure
- One Man Installation
- Easy access to equipment / cabling
- Easy to transport
- Small footprint when packed

Overview

IRFF1 Flat Pack 19" Racks are a cost effective solution to 19" Racking for in cabinet audio visual installations and many other applications where cost effective 19 inch equipment installation is required. The flat pack design has been simplified to reduce the total number of assembly parts – this also means transport is more cost effective as well. Industry standard 19" design allows for use of standard 19" rack accessories*. Designed for one man to carry and assemble in under 10 minutes using a single flat screw driver. Available in the following U heights only.

16U Part Number IRFF1-16-440

20U Part Number IRFF1-20-440

30U Part Number IRFF1-20-440

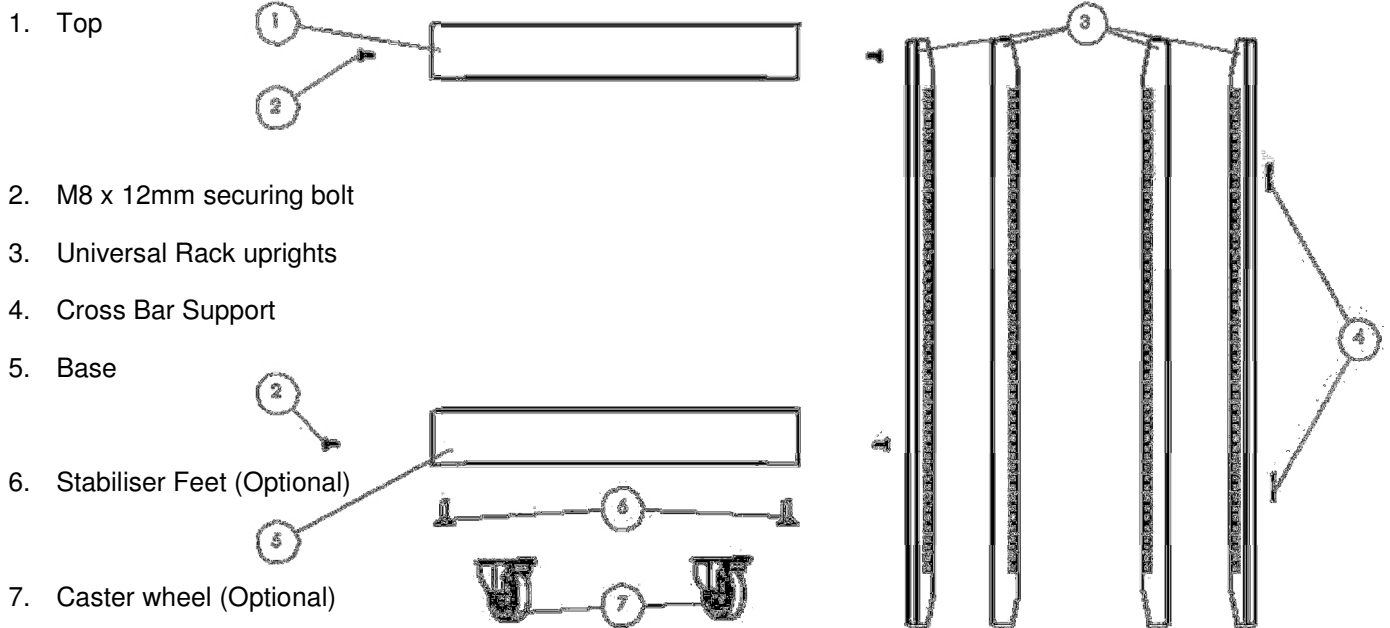
IRFF1 Base Accessories

Optional

- caster wheels (IRA-WHEEL-80)
- base stabilizer feet (IRA-STAB-80)



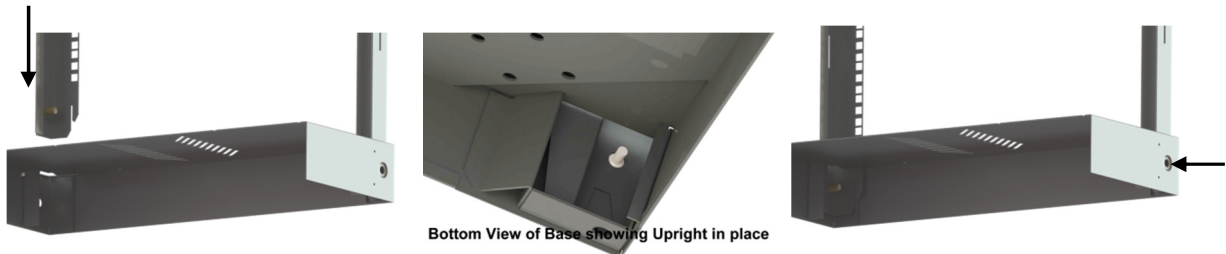
Exploded Assembly Diagram



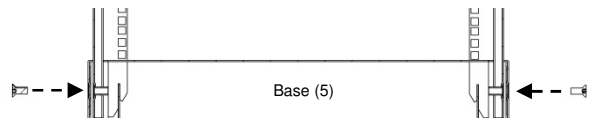
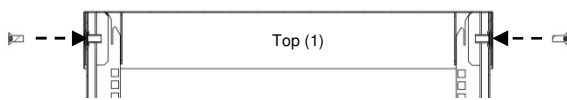
Assembly Sequence - Rack

The assembly sequence refers to the assembly diagram above. Tools required: Single flat screw driver

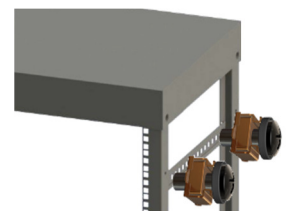
1. Place rack base (5) on level surface.
2. Insert the four *universal* uprights (3) into slots on Base.



3. The upright is in position when the bolt & insert nut holes line-up. Insert bolts (2) through rack base into the upright. Repeat for 4 uprights. **DO NOT TIGHTEN UNTIL ASSEMBLY IS COMPLETE.**
4. Place top (1) onto the rack uprights. The uprights must slot into the top retaining brackets. Check alignment of securing bolt on the 4 sides. Push top down until the 4 holes line up. Insert bolts (2) through rack base into the upright. Repeat for 4 uprights. **DO NOT TIGHTEN UNTIL ASSEMBLY IS COMPLETE.**



5. Insert cross bar support (4) cage nut retainers into uprights(3).
6. Place cross bar supports (4) over cage nuts and insert cage screws.
7. Repeat for all cross bar supports (4)
8. Tighten all bolts using flat screw driver.
9. Tighten all cross bar support bolts.



Assembly Sequence - Accessories

Installing additional options

1. Turn Rack upside down so that the bottom is facing up.
2. Insert optional wheels (7) and stabilizer feet (6)
3. Lay Rack in horizontal position and install Trays.
4. Position rack on the base and adjust stabilizer feet (if installed) to level the rack.

Specifications

Dimensions

Width 540mm
Depth 440mm

Height

16U 875mm
20U 1050mm
30U 1500mm

Load: 200kg

General:

Material Mild steel
Color Matt Black
Colors on request
Finish Powder Coat

Protection

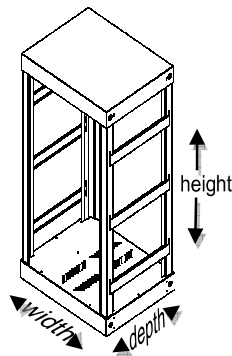
None

Country of origin

South Africa

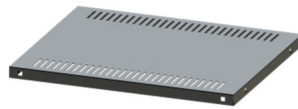
Supplied with:

- | | |
|----|------------------------------|
| 4 | 19" uprights |
| 1 | Base |
| 1 | Top |
| 4 | Cross Bar Supports (16U/20U) |
| 8 | Cage Nuts(16U/20U) |
| 6 | Cross Bar Supports (30U) |
| 12 | Cage Nuts(30U) |
| 8 | M8x12mm countersunk screws |

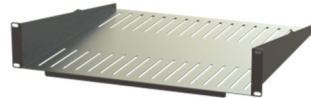


Accessories

IRA-TR-FLAT-600-B



IRA-TR-2U-320-B



IRA-CT-xx

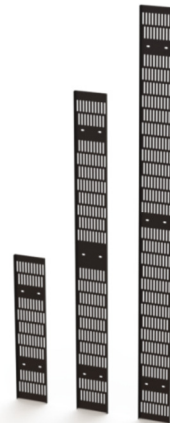
Cable Tray. Sizes available are

IRA-CT-16-B (4 Rack Nuts)

IRA-CT-19B (4 Rack Nuts)

IRA-CT-30B (6 Rack Nuts)

Rack Nuts are supplied separately refer part number IRA-NS-xx



IRA-WHEEL-50

4 x 50kg nylon castor wheels with 16xM6 nuts and bolts



IRA-STAB-80

4 x 80kg stabiliser feet.



Please Note:

- Before loading rack ensure the base is level and all fixing screws plus cross bars are secure.
- Overloading of rack can lead to serious injury.
- Tilting a loaded rack can lead to serious injury