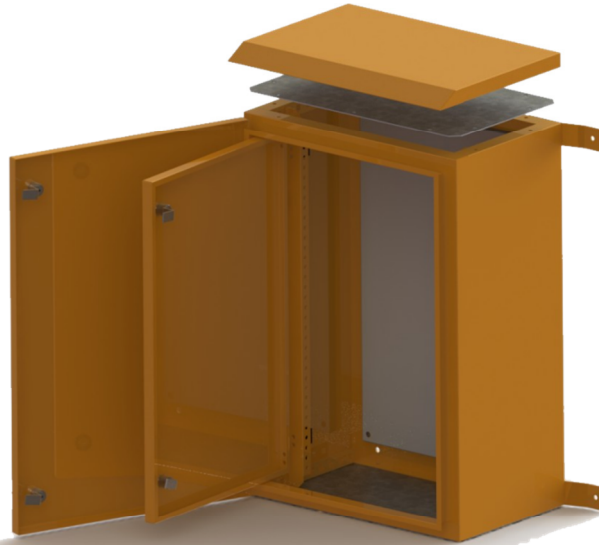


IEL2-xxx

Weatherproof Wall Mount Enclosure



Features:

- Weatherproof Wall Enclosure.
- Removable Chassis.
- Removable top and bottom gland plate.
- Mounting bracket set.
- Gutter construction for better protection
- UV resistant powder coat.
- Orange or Grey
- Additional colors available on order

Benefits:

- Cost effective.
- Quality manufacture
- Can install in direct sunlight
- Removable gland plate for easy drilling
- Replaceable gland plate

Description

The IEL2-xxx range of weatherproof enclosures allow you to configure the enclosure to suit the job requirements. The enclosure comes complete with a body, top and bottom gland plate, chassis plate and 4 mounting brackets. An optional roof can be added in place of the top gland plate to provide a weatherproof enclosure. Inner door uprights can be added to provide an adjustable depth mounting upright for the optional inner door.

The enclosure has been designed for contractors to keep minimum inventory levels and configure the panel to suit the job requirements.

Designed and manufactured in South Africa to the highest quality standards

Weatherproof Roof

Remove the top gland plate and screw on the optional roof to convert the enclosure to a weatherproof unit. Gutter Construction body means that the enclosure is weatherproof. Height of roof is 25mm



Sizes (height x width x depth in mm)

IEL2-200-G	175x250x170 Grey
IEL2-201-G	350x250x170 Grey
IEL2-202-G	450x300x220 Grey
IEL2-203-G	550x400x220 Grey
IEL2-204-G	650x450x270 Grey
IEL2-205-G	750x550x270 Grey
IEL2-206-G	950x700x270 Grey
IEL2-207-G	1150x850x270 Grey

IEL2-200-O	175x250x170 Orange
IEL2-201-O	350x250x170 Orange
IEL2-202-O	450x300x220 Orange
IEL2-203-O	550x400x220 Orange
IEL2-204-O	650x450x270 Orange
IEL2-205-O	750x550x270 Orange
IEL2-206-O	950x700x270 Orange
IEL2-207-O	1150x850x270 Orange

Chassis Plate (width x height in mm)

IEL-200 Chassis plate	105mm x 180mm	IEL-204 Chassis plate	380mm x 580mm
IEL-201 Chassis plate	280mm x 180mm	IEL-205 Chassis plate	480mm x 680mm
IEL-202 Chassis plate	230mm x 380mm	IEL-206 Chassis plate	630mm x 880mm
IEL-203 Chassis plate	330mm x 480mm	IEL-207 Chassis plate	780mm x 1080mm